



Production Specification.

Train.
Toldbodgade 6-8.
8000 Århus C.
Denmark.

Contacts:

Venue Manager:

Helle Rysholt
PH: +45 86224732
Fax: +45 86225032
Mob: + 45 20444732
E-Mail: booking@train.dk

Venue Manager Ass.

Mikkel Dyekjær.
PH: +45 86224732
Fax: +45 86225032
Mob: +45 20250998
E-Mail: booking@train.dk

PR Manager:

Janus Jauch
PH: +45 86134722
Fax: +45 86138722
Mob: +45 24252700
E-Mail: janus@train.dk

Production Manager

Mads Bøgedal
PH: +45 86 208348
Fax: +45 86138722
Mob: +45 20862248
E-Mail: mads@train.dk

Sound Engineer:

Kim Johansen
Mob: +45 21625529
E-Mail: kim@train.dk

Light Engineer:

Thomas Van Nord
Mob: +45 27102611
E-Mail: tvn@nordic.dk

PA Specs:

PA System:

2 x 3 Turbosound Floodlight TFL 760h top boxes
2 x 3 Turbosound TSW-721 subs

PA Amps:

Powered by Lab amps

Mixer:

1 x Midas Heritage 2000 46 mono 2 stereo

FOH Outboard:

1 x TC 2290 digital delay
2 x TC M 4000
1 x TC M 3000
1 x Yamaha SPX 990
1 x TC D-Two Delay

4 x TC C300 dual comp/gate
8 x DBX 160 A compressor
4 x Drawmer DS 201 dual noise gates

1 x TC EQ station – 4 channels with remote
1 x HBB CD recorder
1 x Denon Mini Disc Recorder DNM-1050 R
1 x Fostex D-5 Digital DAT

Monitor specs.

The monitors at Train are primarily driven from the FOH mixing console.
The system consists of 6 independent pre fade aux sends.

System:

8 x Turbosound TFM 330 bi amped wedges. 15" + 2"
4 x TC XO-24 + Lab Amps(8 sends)
1 x TC EQ station, 8 channels with remote

Stage box 40 ch XLR passive splits are available for artists who carries own monitor system.

Power supply:

Power for sound:

All sound equipment is connected to its own mutual earth. No lights, bars refrigerators etc.
All Train PA, FOH and monitor amps runs on separate 3x63A, which is not accessible to bands.

For external sound and backline equipment we have the following available:

10 x 1 x 10A 3 pin LK 230V onstage
1 x 3 x 32A 5 pin CEE stage left
1 x 3 x 16A 5 pin CEE stage left
5 x 1 x 16A 3 pin CEE stage left
All above powered by one 3 x 32A outlet

1 x 110 V transformer 1200W

Power for light:

1 x 3 x 32A 5 pin CEE stage left
3 x 3 x 16A 5 pin CEE stage left
6 x 1 x 16A 3 pin CEE 230 V stage left
All above powered by one 3 x 32A outlet

2 x 3 x 63A 5 pin CEE stage left

Microphones, DI boxes, Stands, Risers, Stage Size.

Microphones:

2 x Shure SM 58
8 x Shure Beta 58A
12 x Shure SM 57
1 x Shure Beta 91
5 x Shure SM 98
3 x Shure SM 81
3 x AKG C 535 EB
3 x AKG CK 91
2 x AKG D 112
5 x Sennheiser 604
1 x Neumann KMS 105
1 x Shure Beta 52

DI Boxes:

12 x BSS AR 133

Stands:

10 x K&M short stands with boom
12 x K&M tall stands with boom
4 x K&M straight stands

Risers:

6 x 1x2 meter risers
Optional heights: 40 cm + 60 cm + 90 cm

Stage size:

Height: 0,9 m
Depth: 5,0 m
Width: 8,0 m
Clearance: 4,0 m

Light spec:

Instruments:

8 x Martin Mac 250 Entour (16 bit mode)
8 x Martin Mac 300 (Mode 4)
4 x Selecon Cond Zoom spot
4 x Par 64 1000W CP60 floor cans
30 x Par 64 1000W CP60
8 x Par 64 1000 W (frontlight)
1 x Emil Niethammer follow spot

Dimmers:

28 x Pulsar Datapak DMX

Controls:

1 x Avolite Sapphire

Misc:

Euro Truss FD33
1 x Black backdrop
1 x White backdrop
8 x Black side legs
1 x Black front curtain
1 x Le Maitre crack oil
1 x Fly bar for backdrop
Lee gels

Dressing room:

1 x 20 m2 room with toilet and shower. Access to stage by staircase.

If needed other possibilities can be arranged.

Production Office:

Train Main office.

Computer with internet access. In addition wireless internet is also available.

PH: +45 86 134722

Fax: + 45 86 138722

Load In:

By ramp from Train Main Entrance. Street name: Toldbodgade
Because of heavy traffic stage doors cannot be used for load in.

Load Out:

By ramp straight out from stage. Street name: Dynkarken.
Please notify your driver.

Parking:

By Train Main Entrance. Landlines available. Street name: Toldbodgade.

Driving Directions:

From the south:

1. Leave highway E45 at exit 50.
2. Turn left at the third light.
Street name: Skanderborgvej/ De Mezasvej/ Frederiks Alle.
3. Turn right at the sixth light.
Street name: Sønder Alle.
4. Go straight over 4 lights. Street name: Toldbodgade
Landline power(220 V.) available.

From the north:

1. Leave highway E45 at exit 47.
2. Turn left at the end of the exit.
Street name: Viborgvej.
3. Turn left at the end of the road.
Street name: Vesterbrogade.
4. Turn right at the second light.
Street name: Vester Allé.
5. Go straight over 6 lights. Street name: Toldbodgade.
Landline power (220 V.) available.

Local Hotels

Hotel Atlantic

Europaplads 10-14

8000 Århus C

PH: +45 86131111

Fax: +45 86132343

Web: www.choicehotels.dk

Located in the same building as Train.

Hotel Royal

Store Torv 4

8000 Århus C

PH: +45 86120011

Fax: +45 86760404

Web: www.hotelroyal.dk

5 min walk/drive from Train.

Hotel Guldsmeden

Guldsmedgade 40

8000 Århus C

PH: +45 86134550

Fax: +45 86137676

Web: www.hotelguldsmeden.dk

10 min walk/drive from Train.

Radisson SAS Hotel

Magrethepladsen 1

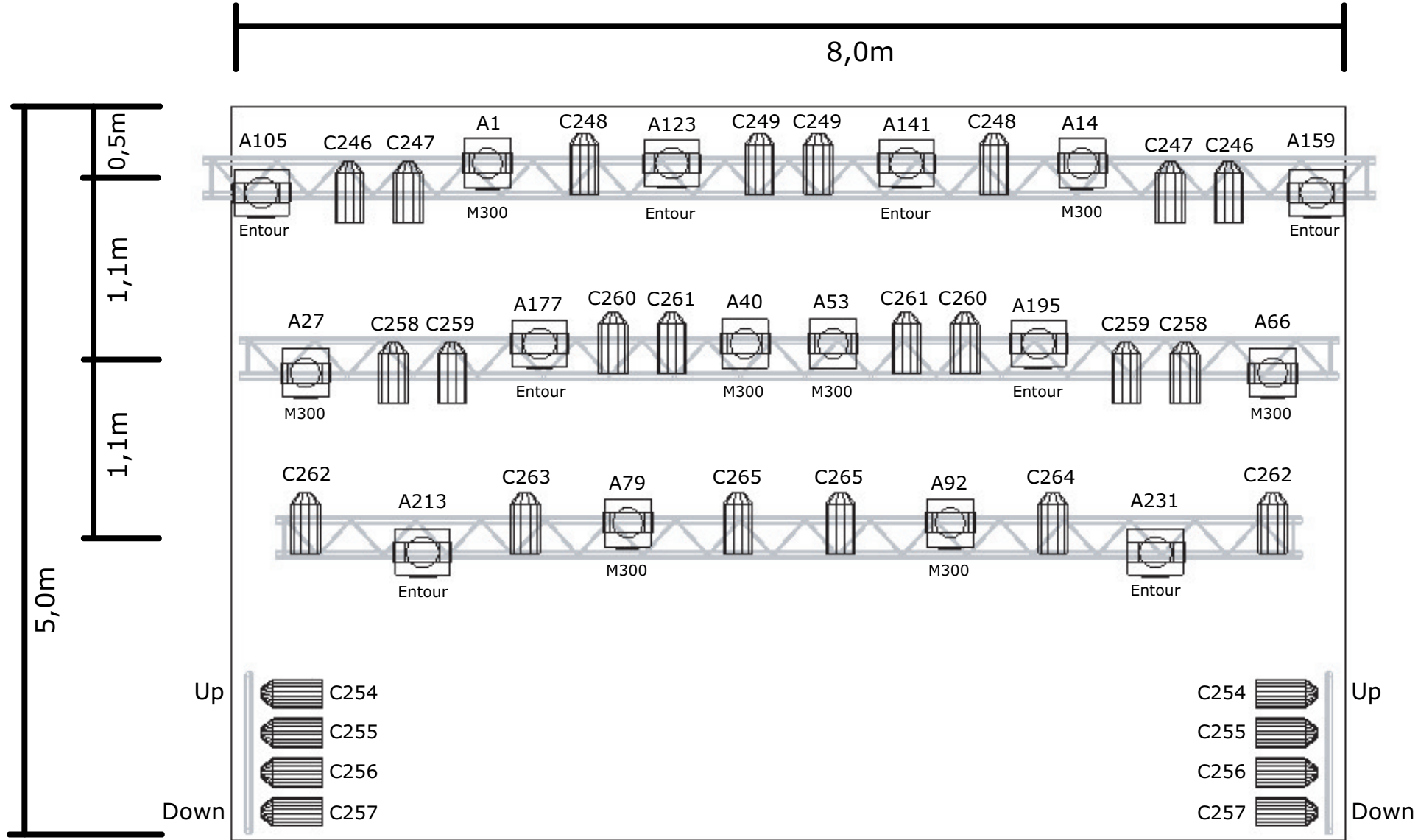
8000 Århus C

PH: +45 86128665

Fax: +45 86128675

Web: www.radissonsas.com

5 min walk/drive from Train.

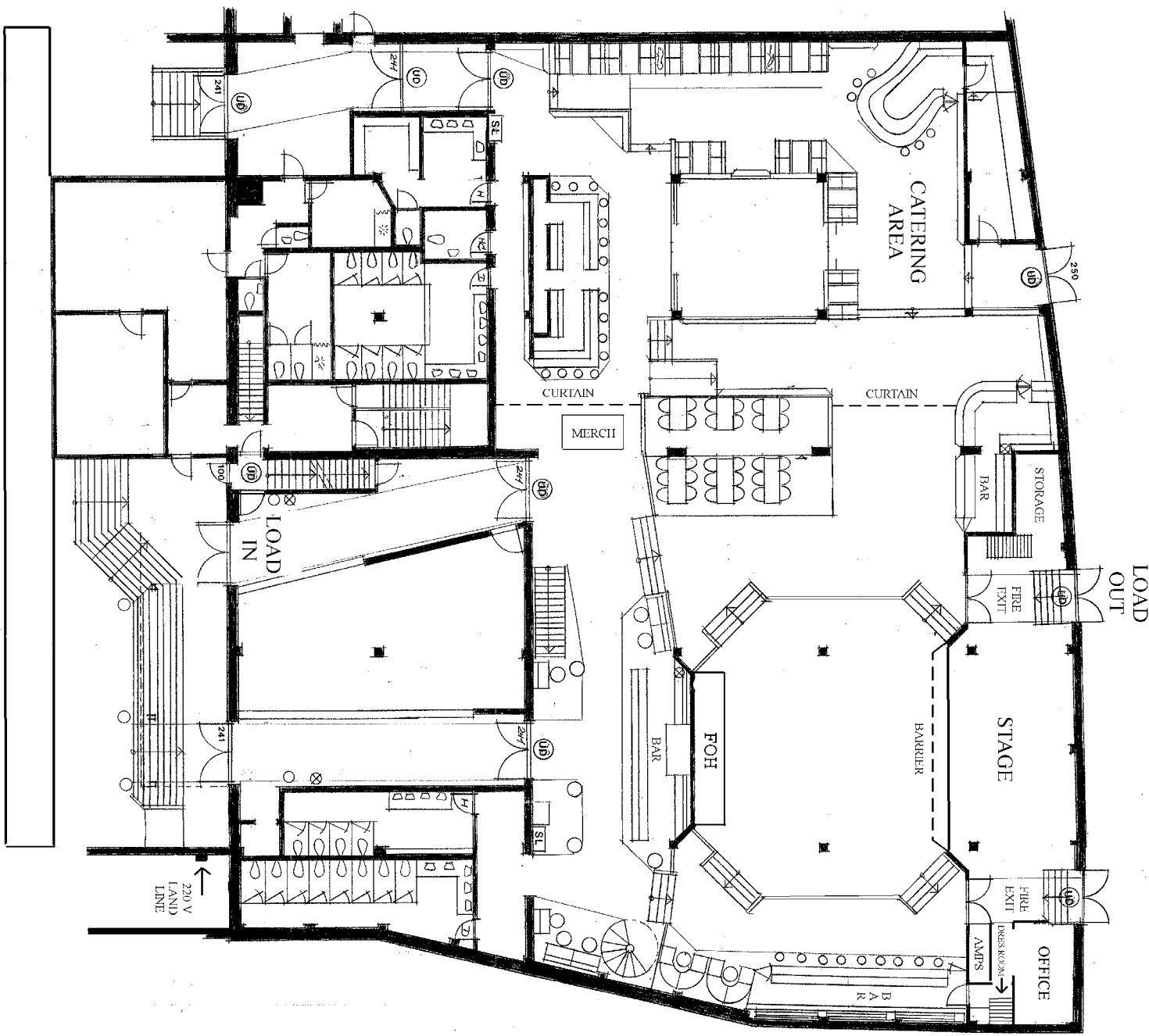


Link C:
 C270 - C273: Profil - 1,2 kW
 C246 - C265: PAR64 - CP 60
 C266 - C267: Free Dimmers
 C268 - C 269: House Light

Link A:
 A1 - A104: Mac300 (Mode 4)
 A105 - A245: Mac250 Entour (16 bit - NOT 16 bit ex.)

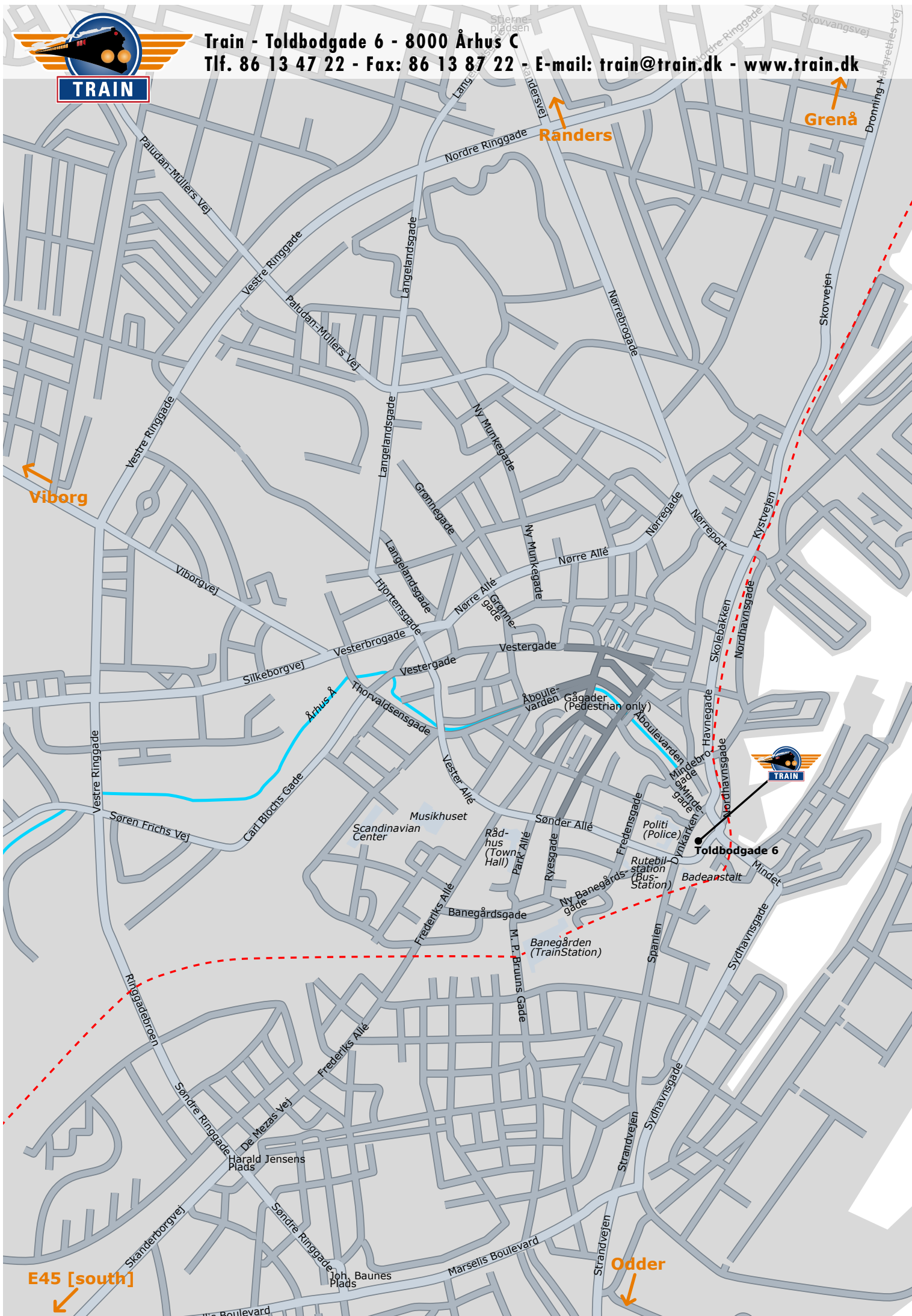
<h2>Train - Stage</h2>
Drawn by: Julle
Date: 16.08.2005

PARKING





Train - Toldbodgade 6 - 8000 Århus C
Tlf. 86 13 47 22 - Fax: 86 13 87 22 - E-mail: train@train.dk - www.train.dk



Randers

Grenå

Viborg



Toldbodgade 6

E45 [south]

Odder